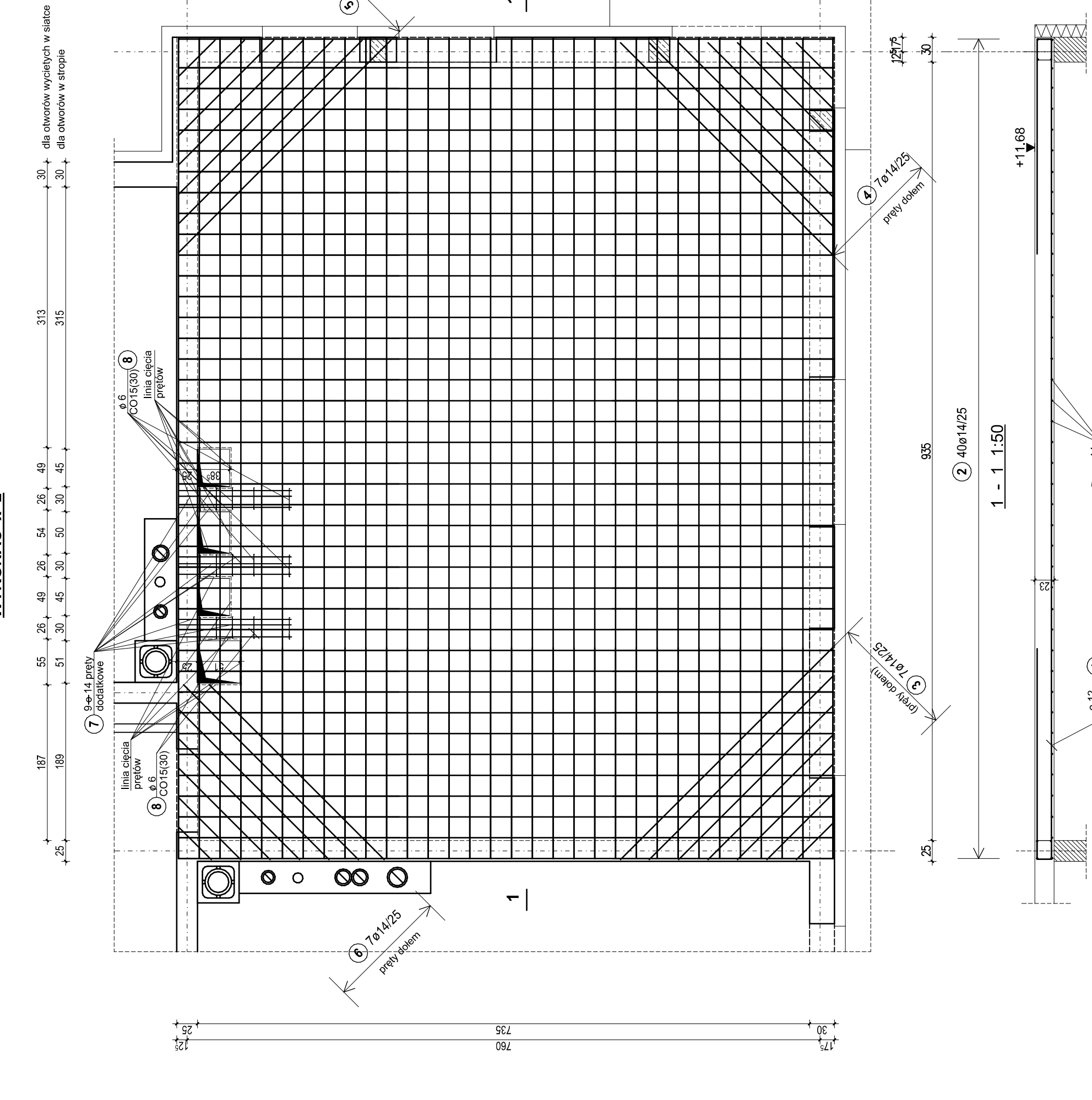


POZ.2.1 PŁYTA KRZYŻOWO ZBRJONNA 9,6x7,6 M



(3) 7 a=14, Dm=2, 12 (di. assoluta)

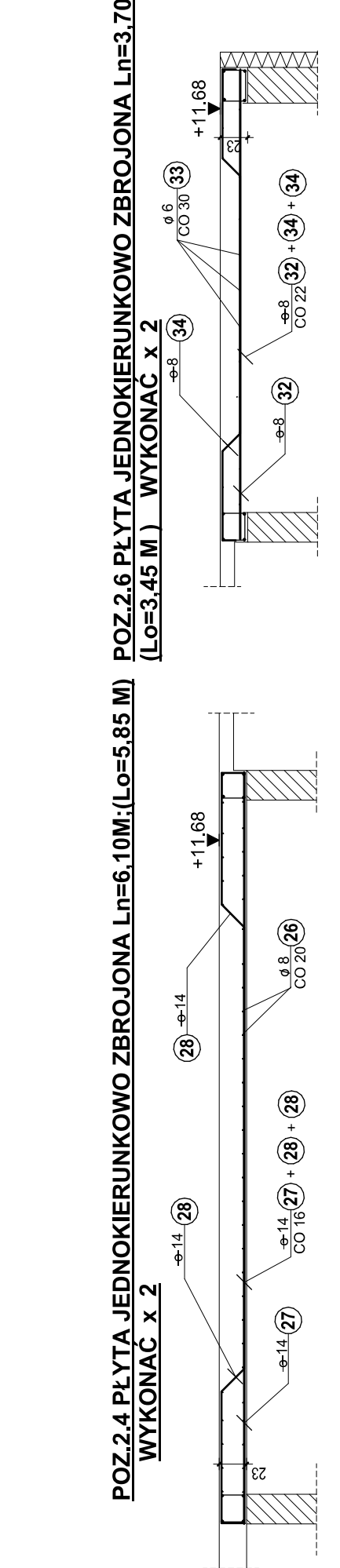
Proz.	Szt.	X	Dlg
1	62	112	112
2	1	112	112
3	1	162	162
4	1	212	212
5	1	312	312
6	1	312	312
7	1	381	381

(4) 7 a=14, Dm=12 (di. assoluta)

Proz.	Szt.	X	Dlg
1	62	112	112
2	1	162	162
3	1	162	162
4	1	212	212
5	1	312	312
6	1	312	312
7	1	381	381

(5) 7 a=14, Dm=2, 12 (di. assoluta)

Proz.	Szt.	X	Dlg
1	62	112	112
2	1	162	162
3	1	162	162
4	1	212	212
5	1	312	312
6	1	312	312
7	1	381	381



(27) 12x14 D=H.31
596

(28) 20x14 D=H.61
531

(26) 30x6 D=H.05 CO.20 CM
503

19
11

20

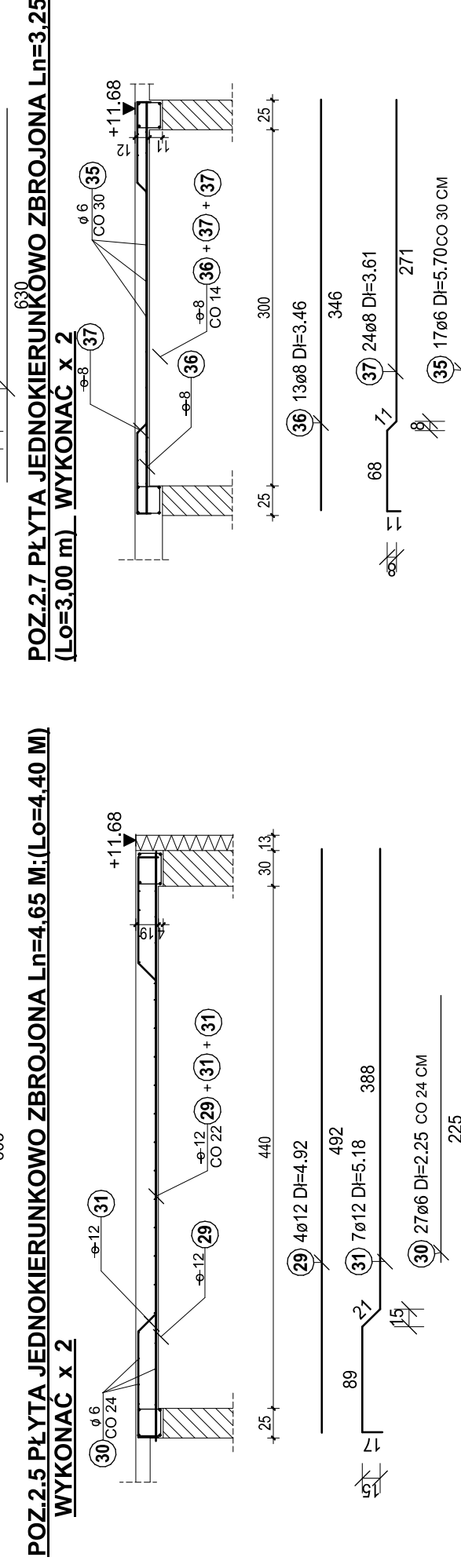
111

75

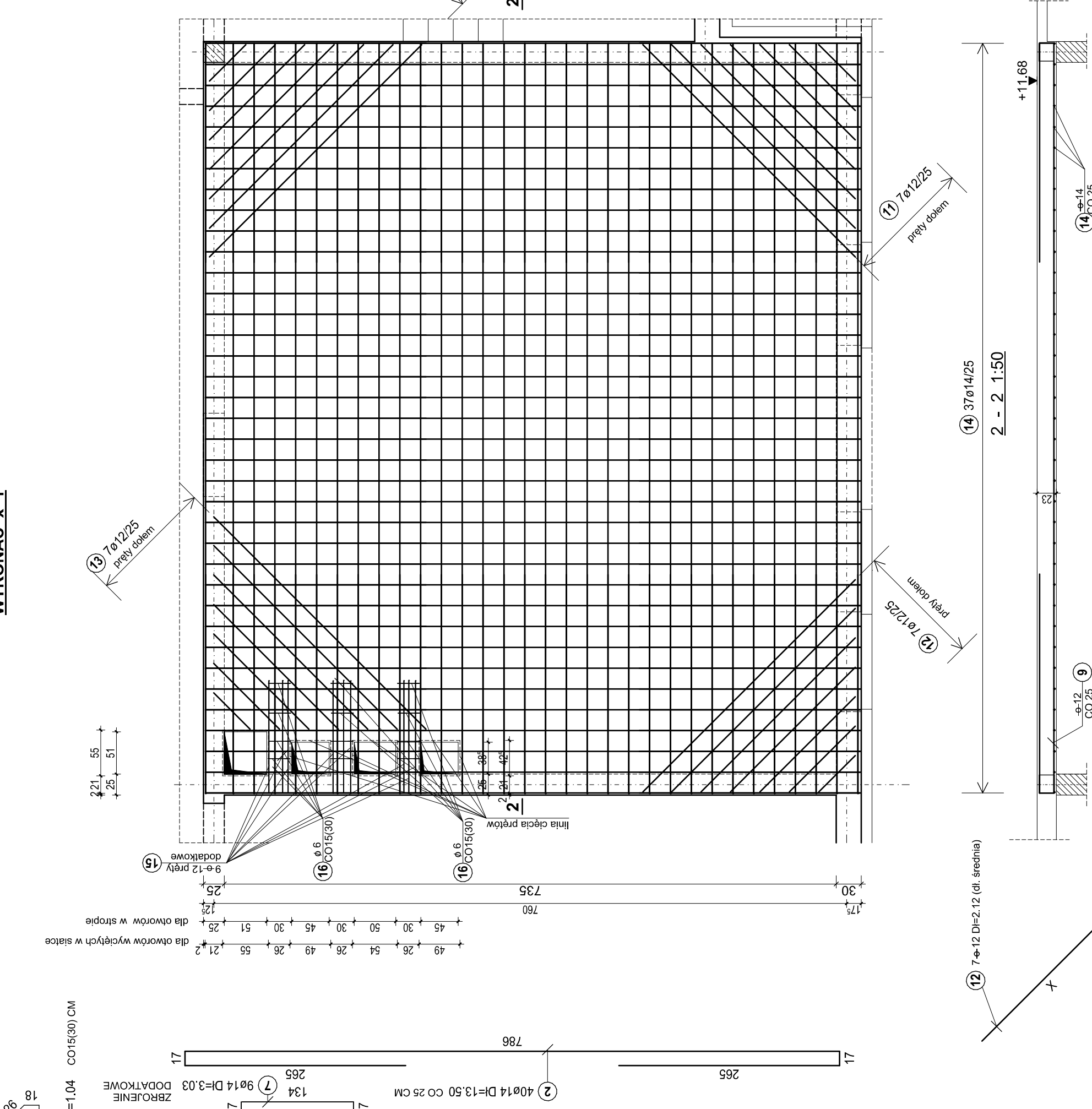
15

25

32



POZ.2.5 PŁYTA JEDNOKIERUNKOWO ZBROJONA L_n=4,65 M:(L_o=4,40 M)

POZ.2.2 PŁYTA KRZYŻOWO ZBROJONA 8.8x7.6 M

PPoz.	Sol.	X Dig
1	1	12
2	1	112
3	1	162
4	1	212
5	1	262
6	1	312
7	1	312

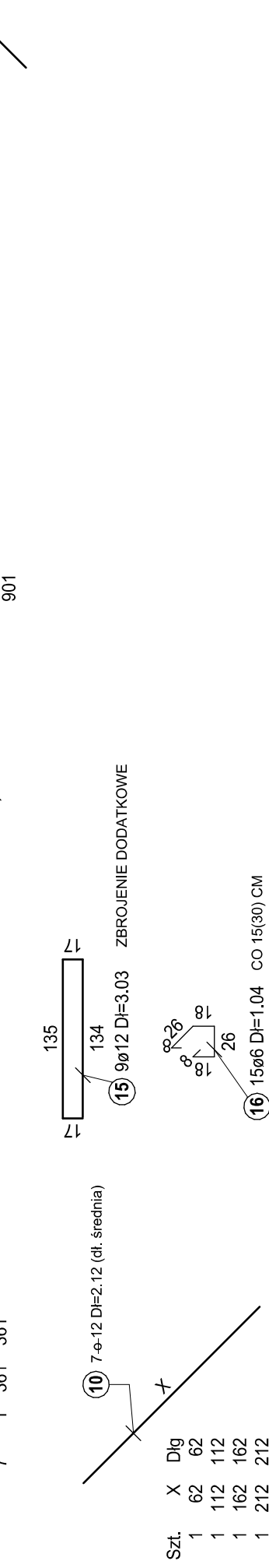
263

17

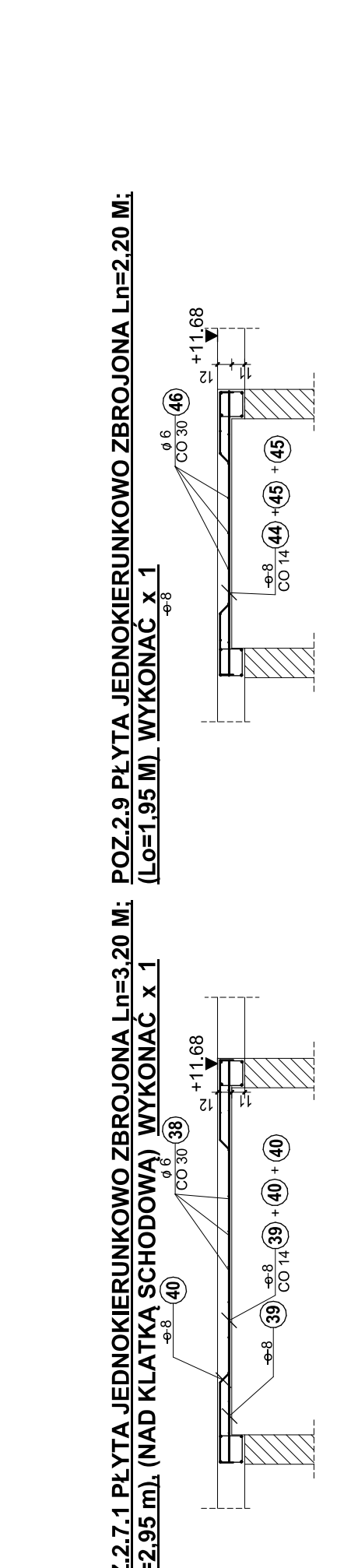
12° 1

+25

9



1 262 262
1 312 312
1 361 361

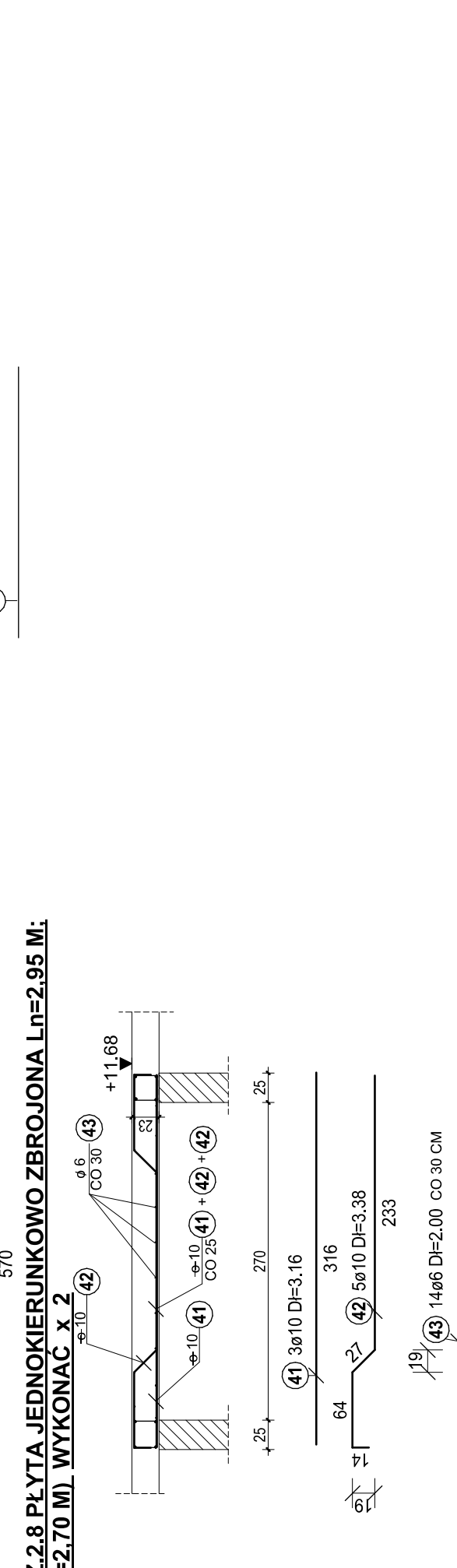


(38) 1508 DI=3.41

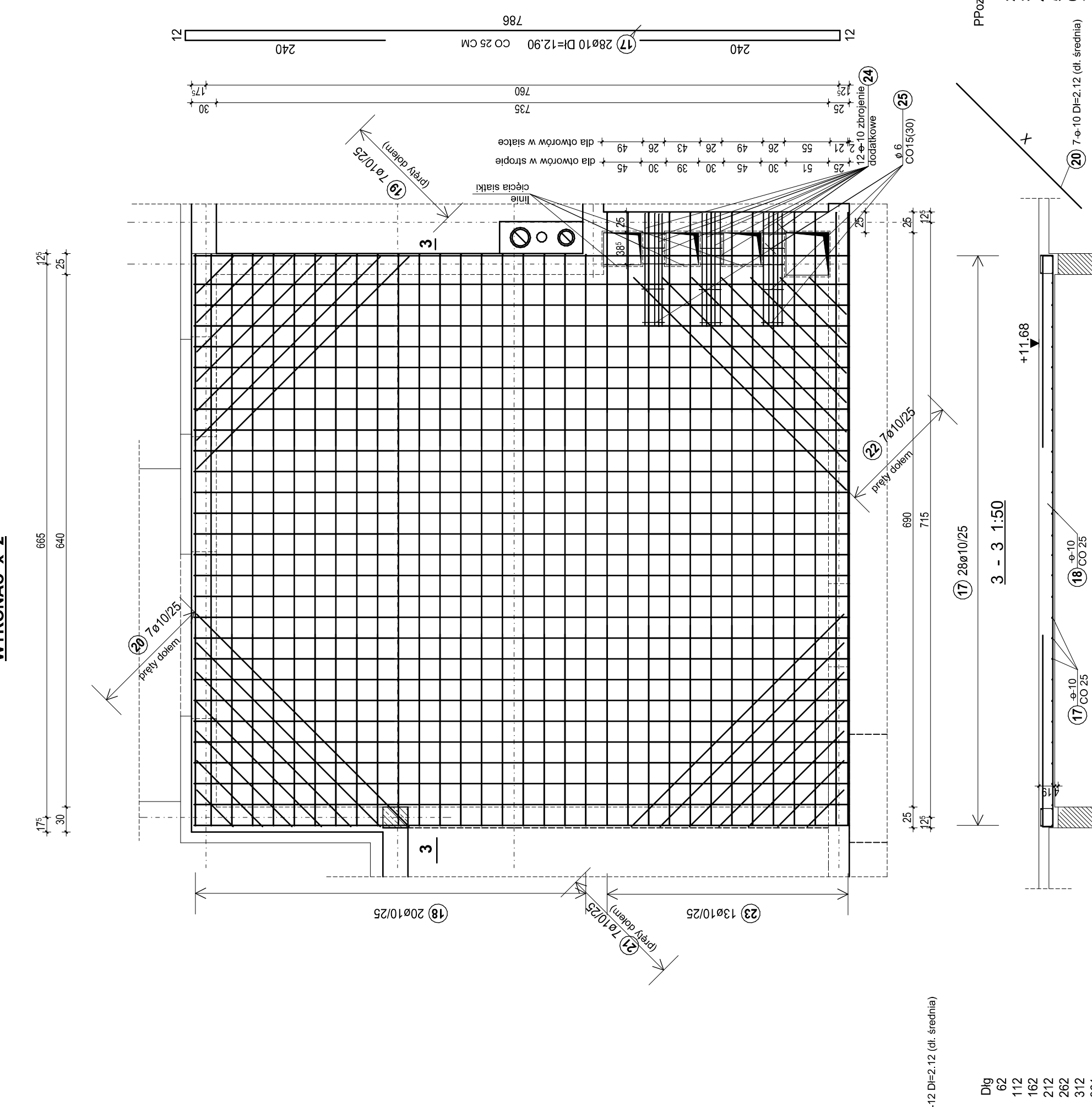
(44) 5868 DI=2.41

(45) 11968 DI=2.55

(46) 1106 DI=36.40 CO 30 CM



5/1

POZ.2.3 PŁYTA KRZYŻOWO ZBROJONA 6.65-7.15x7.6 M

361

(di ancona)

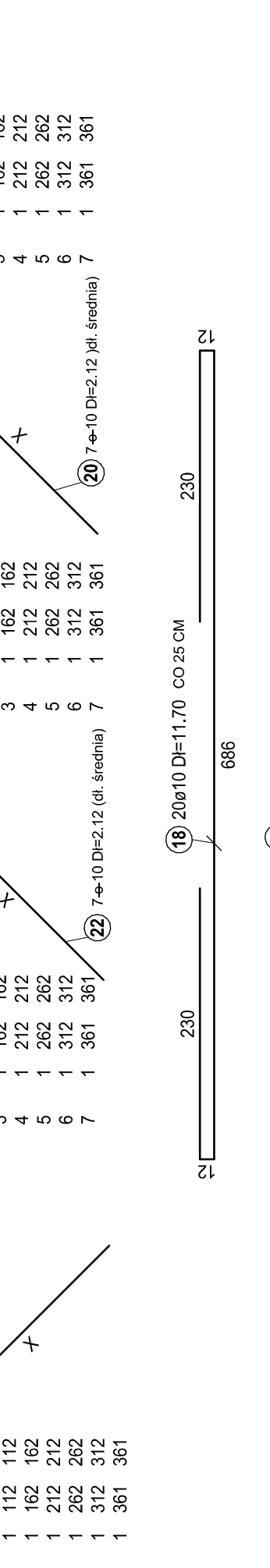
21) $\pi = 0$ Dim-2 (di ancona) PPoz. Szt. X Dig

Szt. 1 1 62 62 X 1 62 62

1 112 112 2 1 112 112

2 1 112 112 2 1 112 112

25 640



(23) $13 \times 10 \text{ D}=12.40 \quad \text{CO } 25 \text{ CM}$

[illegible]

STAL KLASY A-IIIN GAT. RB500W
STAL KLASY A-0 GAT. St0S-b
BETON KLASY C25/30 (B30)

[illegible]